



CX PREMIUM

INSTALLATION AND OPERATION MANUAL

Salt and Mineral Chlorinator

Head Office

62 Parkhurst Drive
Knoxfield VIC 3180
T: 03 9887 2131

New South Wales

Unit 1, 20-22 Foundry Road
Seven Hills NSW 2147
T: 02 9838 0000

Queensland

Unit 4, 8 Reichert Drive
Molendinar QLD 4214
T: 07 5679 6821

info@oasisaquatics.com.au
oasisaquatics.com.au

TABLE OF CONTENTS

- 1. IMPORTANT WARNINGS AND SAFETY INSTRUCTIONS.....4
 - 1.1 Important Warnings.....4
 - 1.2 Important Safety Instructions.....4
 - 1.3 General Warnings.....4
- 2. GENERAL OVERVIEW5
 - 2.1 Recommendations and Helpful Hints.....6
 - 2.2 Contents.....6
 - 2.2 Tools Needed.....6
- 3. POOL PREPARATION7
- 4. POWER PACK AND CELL INSTALLATION.....8
 - 4.1 Power Pack Installation.....8
 - 4.2 Cell Electrode Installation.....8
 - 4.3 Installation Diagram.....9
- 5. INITIAL START UP OF YOUR UNIT.....10
 - 5.1 Initial Start Up.....10
 - 5.2 Start Up Clock Set.....10
 - 5.3 Start Up Run Period.....10
 - 5.4 Start Up Information.....10
 - 5.5 Mineral or Salt Mix.....11
 - 5.6 Default Display Screen11
- 6. CONTROL PANEL OPERATION12
 - 6.1 OK BUTTON12
 - 6.2 POWER/MODE13
 - 6.3 CHLOR BOOST13
 - 6.4 WINTER MODE.....14
 - 6.5 CLOCK/TIMER14
 - 6.51 Clock Settings.....14
 - 6.52 Timer Settings.....15
 - 6.6 SALT TEST16
 - 6.7 BACKWASH17

TABLE OF CONTENTS

7. UNIT MENU GUIDE.....18

 7.1 Backwash18

 7.2 Brightness.....18

 7.3 Cell Cleaning18

 7.4 Chlor Boost18

 7.5 Chlor Setting.....19

 7.6 Clock/Timer19

 7.7 Contrast19

 7.8 Power/Mode.....19

 7.9 Pump Setting.....19

 7.10 Salt Test.....20

 7.11 Service Menu.....20

 7.12 Spa Mode20

 7.13 Winter Mode.....20

8. WATER CHEMISTRY21

9. CHLORINATOR MAINTENANCE23

 9.1 Inspecting and cleaning the cell Electrode.....23

 9.2 Inspecting and cleaning the Power Pack.....24

10. CHLORINATOR TROUBLESHOOTING.....25

11. SCHEMATICS AND PART NUMBERS.....28

12. SPECIFICATION TABLE31

13. WARRANTY32

14. TECHNICAL SUPPORT34

15. NOTES35

1. IMPORTANT WARNINGS & SAFETY INSTRUCTIONS

1.1 Important Warnings



This manual contains important information about the installation, operation and safe use of this product. This information should be given to the owner and/or operator of this equipment. When installing and using this electrical equipment, basic safety precautions should always be followed. Failure to follow safety warnings and instructions in this manual can result in serious injury and/or damage to your equipment. Read and follow all warning notices and instructions which are included in this manual.

The Power Supply internally contains live components. There is a danger of electric shock if opened. If the power cord is damaged then it should be replaced by the manufacturer, their agent or similar

1.2 Important Safety Instructions



To reduce the risk of injury, do not permit young children to use this product unless they have been trained by the person responsible for their safety and they acknowledge their ability to use such equipment. To reduce the risk of accidents or incidents, service on the unit should only be performed by your local pool Professional.

1.3 General Warnings



When mixing acid with water, **ALWAYS ADD ACID TO WATER. NEVER ADD WATER TO ACID.**



DO NOT PLUG UNIT IN IF CARTON HAS BEEN WET.



GAS BUILDUP CAN OCCUR WITH IMPROPER WIRING: To reduce the risk of personal injury the Power Pack is designed so that the Electrolytic Cell will only receive power when the pool pump is on. Otherwise, dangerous chlorine gas build-up can occur. If the pump is not installed to the AC Socket (pump outlet) on the Power Pack then the installer must ensure that the Electrolytic Cell is never energised when the pool pump is OFF or water is not flowing through the unit.

2. GENERAL OVERVIEW



Congratulations on your recent purchase of your Oasis CX Premium Salt & Mineral Chlorinator. Please take a moment to read through the entire manual before installing your new unit. Your chlorinator must be installed and operated as specified

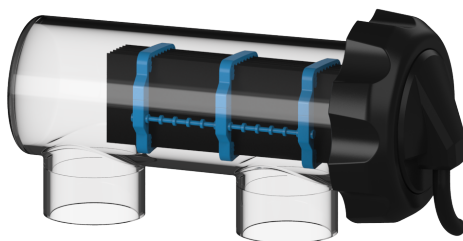
While every effort has been made to ensure that the information contained in this guide is accurate and complete, no liability can be accepted for any errors or omissions. OASIS AQUATICS Pty Ltd reserves the right to change the specification of the hardware and software described herein at any time without prior notice.

Please remember that your Oasis CX Premium Salt & Mineral Chlorinator is not designed to chemically maintain your pool water and keep it balanced, but rather to produce chlorine from a mild salt solution within the water. We encourage regular water testing, balancing and correction if & when required to maintain the recommended balanced levels of your pool water. This is a vital part of a complete maintenance program and will ensure trouble free performance as well as a healthy and sparkling clean pool.

There is one design, comprising 6 different size models in our range:

The models available (CX15, 25, 25LS, 35, 45 and 55) are all reverse polarity units designed to automatically change direction every 4-16hrs (depending on your setting). **See 7.3 CELL CLEANING** to change the reversing times. This change of polarity causes the calcium to dislodge and keep the cell plates clean. Please note occasional cleaning of the electrode plates may still be necessary.

Thank you again for choosing a Oasis CX Premium Salt & Mineral Chlorinator
We wish you many happy years of swimming in your crystal clear pool.

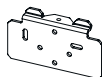


2. GENERAL OVERVIEW

2.1 Recommendations and Helpful Hints

- Read and keep your manual in a safe place.
- Increase chlorine production when temperature goes up.
- Use Stabiliser to stabilise chlorine in pool.
- Maintain your salt levels between 3000-3500ppm for optimum performance.
1500-2000ppm for CX25LS Low Salt Model.
- Decrease production when temperature goes down - see 6.4 WINTER MODE.

2.2 Contents



WALL MOUNTING
BRACKET WITH LEVEL



POWER PACK



CELL HOUSING
WITH UNIONS



2X50/40
Reducing Bushes



2X Green Wall
Plugs with Screws

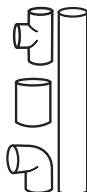


The Installation
& Operating Manual

2.3 Tools Needed



DRILL WITH 6MM



BASIC PVC FITTINGS



HACKSAW



PVC PRIMER
AND GLUE



NO.2 PHILIPS HEAD SCREWDRIVER

3. POOL PREPARATION

Before operating your Oasis CX Premium Salt & Mineral Chlorinator please read the following:



Check your salt levels in your pool before starting your unit. **See 6.6 to perform a SALT TEST.**

Salt levels should ideally be 3000-3500ppm (1500ppm - 2000ppm for CX25LS) and no more than 5000ppm and mineral levels should be 20-30% higher. Contact your local pool Professional for further assistance.

Salt levels above 6000ppm may overload the unit and cause excessive heat and void your warranty.

For all new pool installations please seek advice from your pool builder or your local pool Professional before adding salt, as some new surfaces request no salt to be added when initially completed.

NEVER ADD SALT/MINERALS DIRECTLY TO THE SKIMMER BOX. This high concentration of either salt or minerals will pass through your filtration, pump and other pool.

Handy Tips



The colder the water the lower your output but this does not mean you need more salt. There will always be less chlorine demand in colder water.

We recommend 3.5kg per 1000 litre of pool water and a 50,000lt new pool needs approximately 175kg of salt. For the FRESHWATER LOW SALT SYSTEM Model: CX25LS, we recommend 1.5kg per 1000 litre of pool water.

The unit can operate on mineral/magnesium chloride salts and you should allow an extra 20-30% on the ppm for these type of salts.

Salt should always be added to the shallow end of the pool and allowed to dissolve. Do not let the salt settle on the floor of the pool as this may cause damage to the surface. Use your pool brush to mix the salt into the water.

Running the pump will mix the water and help the salt to dissolve.

Only run the pump in the first 8-12 hours (ensure the cell is switched off) to allow the salt to dissolve.

By pressing [TDS TEST] a salt measurement is taken and a total TDS reading is displayed. The ideal TDS reading should be 3000-3500 and this will be displayed. If >4500 is displayed the salt level is too high and we suggest taking a sample to your local pool Professional for a more accurate result and further assistance. For the FRESHWATER LOW SALT SYSTEM Model: CX25LS, the ideal TDS reading is 1500-2000ppm.

4. POWER PACK AND CELL INSTALLATION

4.1 Power Pack Installation



The Oasis CX Premium Salt & Mineral Chlorinator has an Ingress Protection Rating of IP23 enabling it to be installed outdoors. Regulations require that the Power Pack shall be installed outside the pool zone. The Power Pack shall be installed according to AS/NZS 3000 wiring rules.

The Power Pack should be installed in a well ventilated position ideally away from sunlight and rain to prolong life and at least 1m above ground to prevent run off water entry.

Ensure that the Power Pack is not stored near chemicals, fertilisers or in a closed unventilated shed with similar products as the fumes will cause excessive corrosion and damage to the internals of the Power Pack and may void warranty.

When mounting the Power Pack on a post it is recommended to install a flat panel at least the same size to act as a waterproof backing plate.



Mount the Power Pack with the Mounting Bracket, Green Plugs and Screws provided.

The Power Pack should be mounted no further than 1.5 metres from the Chlorinator Cell for ease of operation.

4.2 Cell Electrode Installation



Connect the Cell Housing horizontally in the return line to the pool (use reducing bushes supplied if 40mm PVC pipe) using high pressure PVC glue. The Cell Housing can be mounted vertically but provision must be made for a gas trap.

Direction of water flow through the Cell Housing is not critical although we do recommend entry from the closed end of the Cell Housing and exit from the end closest to the Cell Locking Ring. The reason is to cause less water hammer over time on the cell plates.

Check that the O-ring is clean, greased with silicone grease (**DO NOT** use petroleum based jelly) and securely located in the Cell Housing.

Ensure Cell Locking Ring is firmly tightened by hand (**DO NOT** use a tool to tighten).

Connect the lead from the Cell Electrode to the Cell Plug under the Power Pack ensuring a firm snap lock connection.

Plug the Power Pack 3 pin plug into a suitable weatherproof RCD protected 10amp outlet and then plug the pump into the 3 pin AC Socket located at the bottom of the Power Pack.

4. POWER PACK AND CELL INSTALLATION

4.3 Installation Diagram



WARNING: DO NOT plug in if carton has been wet.



Important Notes:

The pump rating must not exceed 8amps.

Saltwater may damage electrical components in the Power Pack.

WARNING:

We **DO NOT** recommend the use of valves on the inlet or outlet of the cell housing. If you do use a valve then it is important to ensure that the valve cannot deadhead (lock closed) while the pump is running. It is the installers responsibility to ensure some form of flow control is installed in this instance and it disables the pump.

ALWAYS ensure that pipe work and equipment do not allow gases generated from the cell to collect and build up in any part of the installation.

It is **RECOMMENDED** that the Cell Housing be installed horizontally to create a natural gas trap that acts as a safety device. Installation in any other way may cause explosion, injury or death if the installer does not allow for gas removal. A venturi pipe is installed/moulded within the Cell Housing design to eliminate any possible gas build up, although it is always recommended to ensure proper installation to eliminate this from happening.

The Cell Housing must be installed in the **RETURN** pipework to the pool. It must always be installed after the filter, gas heater, solar heating or heat pump.

DO NOT apply priming fluid to the Cell Housing, it is not needed and may react with the plastic.

5. INITIAL START UP OF YOUR UNIT

5.1 Initial Start Up

On initial start up of your Oasis CX Premium Salt & Mineral Chlorinator the screen to the right will be displayed.

```
EMBEDDED SOFTWARE  
<UER: SCXX.XX >  
CHECKING SYSTEM  
MODEL: 25g/hr
```

5.2 Start Up Clock Set

START UP CLOCK SET allows you to program the exact time of the day. HH digits will flash and pressing [+] will increase the time and pressing [-] will decrease the time.

Pressing [OK] saves the selected hour HH and MM.

Pressing [<] skips this menu however you will need to set this later.

```
START UP CLOCK SET  
ACTUAL TIME: HH:MM  
[+] or [-] to change  
[OK] SAVE
```

MM digits will flash and pressing [+] will increase the time and pressing [-] will decrease the time.

Pressing [OK] saves the selected hour HH and MM.

Pressing [<] returns you to the previous menu screen.

```
START UP CLOCK SET  
ACTUAL TIME: HH:MM  
[+] or [-] to change  
[OK] SAVE [<] RETURN
```

5.3 Start Up Run Period

START UP RUN PERIOD allows you to program your daily run times.

2 CYCLES/DAY will flash and pressing [+] or [-] will change the selection. PERIODS of running.

1: 2 CYCLES/DAY - unit runs from 6am-10am and 4pm-8pm

2: 1 CYCLE AM - unit runs from 8am - 4pm

3: 1 CYCLE PM - unit runs from 8pm-4am

Pressing [OK] saves the selected PERIOD

Pressing [<] returns you to the previous menu screen.

```
START UP RUN PERIODS  
PERIOD: 2 CYCLES/DAY  
[+] OR [-] TO CHANGE  
[OK] SAVE [<] RETURN
```

5.4 Start Up Information

START UP INFORMATION allows you to customise the unit to your pool size.

Pressing [+] or [-] will change it in 1,000lt increments.

Holding the [+] or [-] in will change it in 5,000lt increments.

A reading of 40,000lt or similar flashes to show it can be changed.

Pressing [OK] confirms your selection. If you do not know your pool size you can press

[OK] and set this later or contact your local pool Professional for further assistance.

Pressing [<] returns you to the previous menu screen.

```
START UP INFORMATION  
POOL SIZE: 40,000lt  
[+] or [-] to change  
[OK] SAVE [<] RETURN
```

5. INITIAL START UP OF YOUR UNIT

5.5 Mineral or Salt Mix

MINERAL OR SALT MIX allows you to enter the type of mineral used in the pool.

Pressing [+] or [-] will change it from SALT to MINERAL MIX.

The reason for this is because a higher salt reading is required for MINERALS to be as conductive as SALT.

Pressing [OK] confirms your selection.

Pressing [<] returns you to the previous menu screen.

START UP INFORMATION
MINERAL: SALT
[+] or [-] to change
[OK] SAVE [<] RETURN

5.6 Default Display Screen

DEFAULT DISPLAY SCREEN (DDS) displays the screen to the right. This is the actual output % of the unit.

Pressing [+] or [-] will increase the Setting and the screen will change as seen on the right.

This should always remain at 100% unless SPA MODE has been selected.

The (●) symbol indicates normal operation.

T2 is the default timer displaying "Dual Timer Cycle" and T1 displays "Single Timer Cycle" when single timer is selected.

The Mode shows AUTO and this can be changed by pressing Power/Mode (either AUTO, ON or OFF).

The time shows with HH:MM in 24hr clock format.

The cell status shows as FWD when the cell is in the forward direction and REV when in the reverse direction.

The pump AC socket status is displayed, either ON or OFF.

The Water Temperature is displayed.

Any power failures return you to the DDS screen and the last saved MODE is active.

OUTPUT: 100% (●) T2
Mode: AUTO HH:MM
Cell: FWD PUMP: ON
Water Temp.: XX.X°C

6. CONTROL PANEL OPERATION

6.1 OK BUTTON

Menus are entered by either pressing the menus shortcut button on the control panel or by entering MAIN MENU, which is done by pressing the [OK] button.

Any inactivity in any display for longer than 60 seconds results in the display returning to the DDS screen.

MAIN MENU allows you to enter all MENU's including those available with shortcut buttons on the control panel.

Pressing [+] takes you to the last menu and using the [-] or [OK] enters the first 3 menus.

Pressing [<] returns you to the previous menu screen.

Pressing [+] or [-] scrolls up or down and [OK] enters the flashing menu.

Below are the available menus in the Oasis CX Premium Salt & Mineral Chlorinator

See 7.0 for the workings of any menu's not explained here.

- | | |
|-----------------|-----------------|
| 1 Backwash | 8 Power/Mode |
| 2 Brightness | 9 Pump Setting |
| 3 Cell Cleaning | 10 Salt Test |
| 4 Chlor Boost | 11 Service Menu |
| 5 Chlor Setting | 12 Spa Mode |
| 6 Clock/Timer | 13 Winter Mode |
| 7 Contrast | |

MAIN MENU
Simply use buttons
[+] or [-] to change
[OK] ENTER [<] EXIT

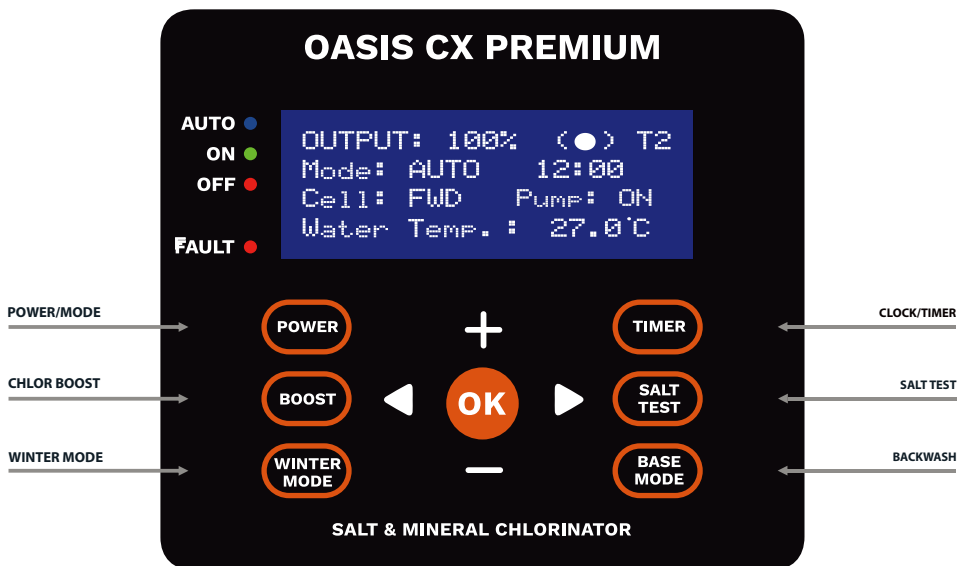
OUTPUT: 100% (●) T2
Mode: AUTO HH:MM
Cell: FWD Pump: ON
Water Temp.: XX.X°C

1 Backwash
2 Brightness
3 Cell Cleaning
[+]UP[-]DN[OK]ENTER

13 Winter Mode

[+]UP[-]DN[OK]ENTER

11 Service menu
12 Spa Mode
13 Winter Mode
[+]UP[-]DN[OK]ENTER



6. CONTROL PANEL OPERATION

6.2 POWER/MODE

[POWER] button changes the operating modes of your Oasis CX Premium Salt & Mineral Chlorinator

When pressed the Mode will change AUTO to OFF then ON.

When the unit is first powered on the factory setting is in AUTO as shown to the right.

```
OUTPUT: 100% (●) T2
Mode: AUTO   HH:MM
Cell: FWD    Pump: ON
Water Temp.: XX.X°C
```

Pressing [POWER] to OFF will display the screen as seen to the right

```
OUTPUT: 0% (●) T2
Mode: OFF   HH:MM
Cell: OFF   Pump: OFF
UNIT TURNED OFF
```

Pressing [POWER] to ON will display the screen as seen to the right.

```
OUTPUT: 100% (●) T2
Mode: ON   HH:MM
Cell: FWD  Pump: ON
Water Temp.: XX.X°C
```

Pressing [OK] from the DDS screen enters the MAIN MENU.

Pressing [+] takes you to the last menu and using the [-] or [OK] enters the first 3 menus.

Pressing [<] returns you to the DDS screen.

```
MAIN MENU
Simply use buttons
[+] or [-] to change
[OK] ENTER [<] EXIT
```

Pressing [+] takes you to last menus.

Pressing [+] 5 times above displays the display shown to the right.

Press [OK] to enter POWER/MODE.

Pressing [OK] enters the display shown to the right and pressing the [+] or [-] allows you to adjust the POWER/MODE setting from AUTO to OFF to ON.

Pressing [OK] saves the required mode and returns to the previous screen.

Pressing [<] returns you to the DDS screen.

```
7 Contrast
8 Power/Mode
9 Pump Setting
[+]UP[-]DN[OK]ENTER
```

```
POWER / MODE
Setting: AUTO
[+] or [-] to change
[OK] SAVE [<] BACK
```

6.3 CHLOR BOOST

BEFORE ENTERING CHLOR BOOST YOU MUST BE IN THE DDS SCREEN.

[BOOST] button sets your Oasis CX Premium Salt & Mineral Chlorinator pump to operate for 8hrs and automatically sets the chlorine setting to 100%.

This allows for an injection of extra sanitising time, also known as Chlorine Boost or Super-Chlorinate. The bottom line will alternate between "[CHLOR BOOST] to END" and the fault message if there is any fault during CHLOR BOOST.

```
CHLOR BOOST TIME
Settime: 08:00:00hrs
[+] or [-] to change
[CHLOR BOOST] to END
```

When in operation the LED will be on. After the set time it reverts back to last selected POWER/MODE unless ON then it reverts to AUTO.

The unit automatically defaults to 08:00 hours of ON time and the timer starts counting down immediately.

The first two digits **08** will flash while adjusting them as shown to the right.

Pressing [+] or [-] increases or decreases in increments of 01:00 hrs whilst running.

When completed the unit will return to the DDS screen in the last selected POWER/MODE state and the CHLOR BOOST LED goes OFF.

Pressing [BOOST] again allows you to exit the CHLOR BOOST screen and return to the DDS screen.

CHLOR BOOST can also be entered by pressing the [OK] button in MAIN MENU and scrolling to CHLOR BOOST.

6. CONTROL PANEL OPERATION

6.4 WINTER MODE

BEFORE ENTERING WINTER MODE YOU MUST BE IN THE DDS SCREEN.

[WINTER MODE] button automatically turns your Oasis CX Premium Salt & Mineral Chlorinator set point (Chlor Setting) down by 50% when the unit is either in AUTO or ON mode. The unit defaults to a 50% set point and will stay on this until [WINTER MODE] is pressed again.

WINTER MODE OUTPUT
Setting: 50%
[+] or [-] to change
[OK] SAVE [<] EXIT

When in operation the LED will be on.

Pressing [+] or [-] increases or decreases this 50% set point by increments of 10% from 0% to 90%.

Once your desired set point is entered, pressing [OK] will return to the DDS screen and the output will display at the lowered set point (50% or different if you set it to that).

Pressing [WINTER MODE] whilst ON automatically turns this LED off and the unit returns to a set point of 100%.

Pressing [TIMER] will allow you to adjust operating times of the unit if necessary. **See 6.5 CLOCK/TIMER** for more detail or contact your local pool Professional for further assistance.

WINTER MODE can also be entered by pressing the [OK] button in MAIN MENU and scrolling to WINTER MODE.

6.5 CLOCK/TIMER



BEFORE ENTERING CLOCK/TIMER YOU MUST BE IN THE DDS SCREEN.

Your Oasis CX Premium Salt & Mineral Chlorinator unit comes with a built in digital time. CLOCK /TIMER displays are all shown in 24 hour format.

[TIMER] button allows you to set the CLOCK and run TIMER times of the chlorinator .

It is important to understand the difference between CLOCK and TIMER. CLOCK means the physical time of the day (e.g. 08:00) and TIMER means the settings programmed to turn the unit ON and OFF

To run the chlorinator in MANUAL ON (i.e. always ON):

Mode set to: ON

T1 & T2 ON & OFF set to 00:00

6.5.1 Clock Settings

CLOCK SETTING allows you to program the exact time of the day.

HH digits flash and pressing [+] increases the time and [-] decreases the time.

Pressing [OK] accepts the selected hour HH.

Pressing [<] exits you to the DDS screen.

CLOCK SETTING
ACTUAL TIME: HH:MM
[+] or [-] to change
[OK] SAVE [<] EXIT

MM digits flash and pressing [+] increases the time and [-] decreases the time.

Pressing [OK] accepts the selected minute MM.

Pressing [<] returns you to the previous display.

CLOCK SETTING
ACTUAL TIME: HH:MM
[+] or [-] to change
[OK] SAVE [<] RETURN

Obviously sunlight and higher bather loads in summer dissipate more chlorine than in winter. That is why you need to check your chlorine reading regularly and adjust your settings when required .

6. CONTROL PANEL OPERATION



Summer Settings

Ideally, run for 4 hours in the morning (6am-10am) and 4 hours in the evening (4pm-8pm). For a smaller pool you can run less hours. In extreme weather it may be necessary to run longer hours. Contact your local pool Professional for further assistance.



Winter Settings See 6.4 WINTER MODE for more detail

6.52 Timer Settings

Pressing [TIMER] displays the screen to the right.

Pressing [+] then it changes to Single Timer Cycle (T1).

Pressing [OK] accepts the selected cycle and enters the Timer Program.

To program the actual time of the day press [TIMER] again.

```
HH:MM - DUAL CYCLE
[+] to change cycle
[OK] confirms cycle
[CLOCK] to set clock
```

Pressing [+] changes back to Dual Timer Cycle (T2).

Pressing [OK] accepts the selected cycle and enters the Timer Program.

To program the actual time of the day press [TIMER] again.

```
HH:MM - SINGLE CYCLE
[+] to change cycle
[OK] confirms cycle
[CLOCK] to set clock
```

TIMER 1: ON TIME (HH)

HH digits flash and pressing [+] increases the time and [-] decreases the time.

Pressing [OK] accepts the selected hour HH.

Pressing [<] returns you to the previous display.

```
TIMER 1: ON TIME
START TIME:  HH:MM
[+] or [-] to change
[OK] SAVE [<] RETURN
```

```
TIMER 1: ON TIME
START TIME:  HH:MM
[+] or [-] to change
[OK] SAVE [<] RETURN
```

TIMER 1: ON TIME (MM)

MM digits flash and pressing [+] increases the time and [-] decreases the time.

Pressing [OK] accepts the selected minute MM.

Pressing [<] returns you to the previous display.

```
TIMER 1: OFF TIME
STOP TIME:   HH:MM
[+] or [-] to change
[OK] SAVE [<] RETURN
```

```
TIMER 1: OFF TIME
STOP TIME:   HH:MM
[+] or [-] to change
[OK] SAVE [<] RETURN
```

TIMER 1: OFF TIME (HH)

HH digits flash and pressing [+] increases the time and [-] decreases the time.

Pressing [OK] accepts the selected hour HH.

Pressing [<] returns you to the previous display.

```
TIMER 2: ON TIME
START TIME:  HH:MM
[+] or [-] to change
[OK] SAVE [<] RETURN
```

```
TIMER 2: ON TIME
START TIME:  HH:MM
[+] or [-] to change
[OK] SAVE [<] RETURN
```

TIMER 1: OFF TIME (MM)

MM digits flash and pressing [+] increases the time and [-] decreases the time.

Pressing [OK] accepts the selected minute MM.

Pressing [<] returns you to the previous display.

```
TIMER 2: OFF TIME
STOP TIME:   HH:MM
[+] or [-] to change
[OK] SAVE [<] RETURN
```

```
TIMER 2: OFF TIME
STOP TIME:   HH:MM
[+] or [-] to change
[OK] SAVE [<] RETURN
```

TIMER 2: ON TIME (HH)

HH digits flash and pressing [+] increases the time and [-] decreases the time.

Pressing [OK] accepts the selected hour HH.

Pressing [<] returns you to the previous display.

6. CONTROL PANEL OPERATION

6.6 SALT TEST

BEFORE ENTERING SALT TEST YOU MUST BE IN THE DDS SCREEN.

[TDS TEST] button measures the salt level in your swimming pool. A reading will appear on the screen, allow at least 30 seconds for an accurate reading.

BEFORE PERFORMING A SALT TEST, ENSURE THE CELL IS CLEAR OF ANY CALCIUM DEPOSITS, AS THIS WILL INSULATE THE ELECTRODES AND IMPACT YOUR READINGS. See 9.1 Inspecting and Cleaning the Cell Electrode if manual cleaning is required.

The Salt level is tested and displayed as shown to the right.

Pressing [TDS TEST] brings up the screen to the right for 6 seconds. This allows for the testing of the TDS range.

```
SALT TEST MODE: FWD
Testing Salt Level
Please Wait ...
[SALT TEST] to END
```

The screen automatically then brings up the FWD direction TDS range for you to record, as per the screen to the right for 5 seconds.

```
SALT TEST MODE: FWD
TDS Value: >3500ppm
SALT HIGH but OK
[SALT TEST] to END
```

The screen automatically then brings up the CELL DISCHARGING which allows the cell to loose its charge in the FWD direction, as per the screen to the right.

```
SALT TEST MODE: OFF
Cell Discharging ...
[SALT TEST] to END
```

The screen to the right displays allowing for the testing of the TDS range.

```
SALT TEST MODE: REV
Testing Salt Level
Please Wait ...
[SALT TEST] to END
```

The screen automatically then brings up the REV direction TDS range for you to record, as per the screen to the right for 5 seconds.

```
SALT TEST MODE: REV
TDS Value: >3500ppm
SALT HIGH but OK
[SALT TEST] to END
```

The LCD display then automatically returns to the DDS.

Low salt levels (below 1000ppm) and high salt levels (above 8000ppm) are difficult to measure and results may become inaccurate. It may be that your cell needs replacing, contact your local pool Professional for a more accurate result and further assistance.

The SALT TEST measurement is meant to be a guide only as many factors can impact the result. We recommend you take your pool water sample to your local pool Professional before adding salt/minerals or replacing your Cell.

NEVER add more salt if not required. **NEVER** add salt directly in the skimmer box.

SALT TEST can also be entered by pressing the [OK] button in MAIN MENU and scrolling to SALT TEST.

6. CONTROL PANEL OPERATION

6.7 BACKWASH

BEFORE ENTERING BACKWASH MODE YOU MUST BE IN THE DDS SCREEN.

[BACKWASH] button assists you in the operation of your pump and filter during the backwash process.



IMPORTANT INFORMATION BEFORE PERFORMING A BACKWASH.

NEVER OPERATE THE FILTER LEVER WHILE THE PUMP IS RUNNING YOU MAY DAMAGE THE SEAL AND LEAKS MAY OCCUR.

THE PUMP WILL START AND STOP AS YOU REQUIRE.

ENSURE ALL THE VALVES, VALVE HANDLE, LIDS, BASKETS, ETC. ARE IN THE IN THE CORRECT POSITIONS AS PER THE REQUIREMENTS OF THE MANUFACTURERS OF THAT EQUIPMENT.

[FILTER CLEAN] can also be entered by pressing the [OK] button in the MAIN MENU and scrolling to BACKWASH MODE.

ALWAYS FOLLOW MANUFACTURERS INSTRUCTIONS.

IF UNSURE PERFORM MANUALLY BY PRESSING [POWER] ON&OFF TO DO THE FILTER CLEAN.

```
BACKWASH MODE
Set MPValve to Back-
Wash and Press
[OK] NEXT [<] EXIT
```

During BACKWASH the [POWER] button displays the ON LED when the pump is running and the OFF LED displays when the pump is stopped.

Pressing [OK] starts the pump for 2 minutes and TIME LEFT will be displayed automatically counting down in 1 sec increments.

Once dirty water in the waste pipe or sight glass is clear press [OK] to finish. RINSE MODE will then be displayed.

```
BACKWASH MODE
[+] Add 1min to TIME
[-] Stop Pump[OK]NEXT
TIME LEFT: 02:00 min
```

Pressing [OK] stops the pump and RINSE MODE is displayed.

Rotate the filter multi-port valve to the backwash position, ensure the handle locks in place and once ready press [OK] to enter the RINSE MODE cycle.

Pressing [<] or [FILTER CLEAN] allows you to exit and this takes you to BACKWASH COMPLETE.

```
RINSE MODE
Set MPValve to Rinse
Position and Press
[OK] NEXT [<] EXIT
```

```
RINSE MODE
[+] Add 1min to TIME
[-] Stop Pump[OK]NEXT
TIME LEFT: 1:00 min
```

Pressing the [OK] button starts the pump for 2 minutes.

TIME LEFT automatically starts counting down in 1 sec increments.

Once dirty water in the waste pipe or sight glass is clear then press [OK] to finish RINSE MODE and enter BACKWASH COMPLETE MODE.

```
BACKWASH COMPLETED
Set MPValv to Filter
Position and Press
[OK] NEXT [<] EXIT
```

Pressing [OK] stops the pump and BACKWASH COMPLETED is displayed

Rotate the filter multi-port valve to the filter position, ensure the handle locks in place and once ready press [OK] to enter the final BACKWASH COMPLETED cycle.

```
BACKWASH COMPLETED
Final check on all
valves/lid positions
[BACKWASH] to EXIT
```


7. UNIT MENU GUIDE

7.1 Backwash

See 6.7 BACKWASH (CONTROL PANEL OPERATION)

7.2 Brightness

BRIGHTNESS is entered by pressing the [OK] button in the MAIN MENU and scrolling to BRIGHTNESS (Menu 2).

BRIGHTNESS MODE
Setting: 60%
[+] or [-] to change
[OK] SAVE [↩] BACK

The factory setting is 60%.

Pressing [+] or [-] allows you to adjust the BRIGHTNESS. Pressing [OK] saves the

7.3 Cell Cleaning

Smart self-cleaning technology allows the polarity of the OXI Cell plates to change direction every 4–16hrs (depending on your setting). The change of polarity causes the calcium to dislodge and keep the OXI plates clean. Please note occasional cleaning of the plates may be necessary.

CELL REVERSING TIME
Setting: XX hours
[+] or [-] to change
[OK] SAVE [↩] BACK

The factory setting is every 10 hours and this can be adjusted from as low as 4 hours (for high calcium areas) and as high as 16 hours.

In areas where the calcium hardness of the water is low (less than 200ppm) cleaning of the cell may not be necessary. Where calcium levels exceed 200ppm, regular inspection of the cell is necessary. Cleaning in an acid solution may be necessary.

CELL CLEANING is entered by pressing the [OK] button in the MAIN MENU and scrolling to CELL

7.4 Chlor Boost

See 6.3 CHLOR BOOST (CONTROL PANEL OPERATION)

7. UNIT MENU GUIDE

7.5 Chlor Setting

CHLOR SETTING automatically controls the Chlorine output for your Oasis CX Premium Salt & Mineral Chlorinator

This feature is particularly handy when you want to run the pump for longer hours (i.e. maybe with a variable speed pump or you want additional filtration). If this is the case the levels would be decreased.

The factory setting is set to 100%.

Pressing [+] or [-] anytime whilst in the DDS screen increases or decreases in 1% increments.

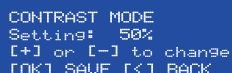
CHLOR SETTING is entered by pressing the [OK] button in the MAIN MENU and scrolling to CHLOR SETTING (Menu 5).

7.6 Clock/Timer

See 6.5 CLOCK/TIMER (CONTROL PANEL OPERATION)

7.7 Contrast

CONTRAST is entered by pressing the [OK] button in the MAIN MENU and scrolling to CONTRAST (Menu 7).



CONTRAST MODE
Setting: 50%
[+] or [-] to change
[OK] SAVE [<] BACK

The factory setting is 50%.


Pressing [+] or [-] allows you to adjust the CONTRAST adjustment and pressing [OK] saves the required CONTRAST and returns to the DDS screen.

7.8 Power/Mode

See 6.2 POWER/MODE (CONTROL PANEL OPERATION)

7.9 Pump Setting

PUMP SETTING is designed to protect your pump if there is no flow of water. This means the time the pump is allowed to run after the water sensor on the Cell detects there is no flow of water. The pump will be turned off from 3 to 10 minutes, after detecting no water flow.



PUMP PROTECTION
Setting: XXX minutes
[+] or [-] to change
[OK] SAVE [<] BACK

PUMP SETTING is entered by pressing the [OK] button in the MAIN MENU and scrolling to PUMP SETTING (Menu 9).

The default setting is 3 minutes and pressing [+] or [-] allows you to adjust the time the pump is turned off for. Pressing [OK] saves the required protection time.

You can also select OFF and it will be disabled and will not stop the pump outlet.

7. UNIT MENU GUIDE

7.10 Salt Test

See 6.6 **SALT TEST** (CONTROL PANEL OPERATION)

7.11 Service Menu

Please contact your distributor or your local pool Professional for further information.

7.12 Spa Mode

SPA MODE allows your unit to be adjusted to suit your spa.

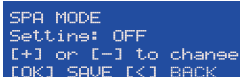
SPA MODE is entered by pressing the [OK] button in the MAIN MENU and scrolling to SPA MODE (Menu 12).

Pressing [+] or [-] allows you to adjust the SPA MODE settings from OFF to ON and ON to OFF.

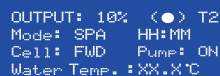
Selecting OFF setting leaves the OUTPUT SETTING at 100% and ON changes the OUTPUT SETTING to 10%.

When SPA MODE is selected on the DDS screen will change as shown to the right.

Pressing [OK] saves the required settings and returns to the DDS screen.



```
SPA MODE
Settings: OFF
[+] or [-] to change
[OK] SAVE [ESC] BACK
```



```
OUTPUT: 10% <●> T2
Mode: SPA   HH:MM
Cell: FWD   Pump: ON
Water Temp.: XX.X°C
```

7.13 Winter Mode

See 6.4 WINTER MODE (CONTROL PANEL OPERATION)

8. WATER CHEMISTRY



The Oasis CX Premium Salt & Mineral Chlorinator unit is designed for use with swimming pool water balanced in accordance with the Langelier Saturation Index with a pH range of 6.8-7.8.

As previously advised, for best performance and operation of your Oasis CX Premium Salt & Mineral Chlorinator unit, certain water balances must be maintained within your swimming pool. Have your water tested regularly. Transport the test water in an opaque container and have the test done as soon as possible as possible for best results.

8.1 Chlorine

Measurement Interval: Once a week

Ideal Chlorine (Free Chlorine) Levels: 2-3ppm (2-3mg/L) and no more than 4ppm (4mg/L). Adjust the chlorine output by pressing [+] in DDS to increase the required output set point in 1% increments up to 100%. Pressing [-] will decrease the output in 1% increments to 0%. Running the unit for longer or shorter hours can achieve the same result.

8.2 Salt

Measurement Interval: Every 4-6 weeks

Ideal Salt Levels: 3000-3500ppm and no more than 4000ppm. For the FRESHWATER LOW SALT SYSTEM Model: VP25LS, the ideal TDS reading is 1500-2000ppm.

Although salt is not consumed by the Chlorinator, salt is lost during backwashing, pool overflow, splashing and on bathers that use it. The correct salt level allows for the most efficient production levels and electricity consumption.

The salt level **SHOULD NOT** go below 3000ppm or 1500ppm for the CX25LS model. Operating the unit with too little salt in the pool will cause damage to your Cell.

Salt is the essential element by which your unit operates. Not enough salt means not enough chlorine - this simple rule governs the total operation of your Oasis CX Premium Salt & Mineral Chlorinator unit, and insufficient salt will damage your Cell. Use Ultrafine Salt or Premium Salt to keep optimum salt levels.

The unit will operate with good stability on higher salt levels but it is still advisable to run at the correct level to prevent damage. Salt levels above 4000ppm or 2500ppm in the CX25LS model may overload the unit and cause excessive heat.



NEVER ADD SALT DIRECTLY TO THE SKIMMER BOX. This high concentration of salt will pass through your filtration, pump and other pool equipment.

HANDY TIP: The colder the water the lower your output but this does not mean you need more salt. There will always be less chlorine demand in colder water.

We recommend 3.5kg per 1000 litres of pool water and a 50,000lt new pool needs approximately 175kg of salt. For the FRESHWATER LOW SALT SYSTEM Model: CX25LS, we recommend 1.5kg per 1000 litre of pool water.

The unit can operate on mineral/magnesium chloride salts and you should allow an extra 20-30% on the ppm for these type of salts.

Salt should always be added to the shallow end of the pool and allowed to dissolve. Do not let the salt settle on the floor of the pool as this may cause damage to the surface. Use your pool brush to mix the salt into the water.

Running the pump will mix the water and help the salt to dissolve.



Low salt levels (<1000ppm) will destroy the coating on the Cell and void the warranty.

8. WATER CHEMISTRY

8.3 pH

Measurement Interval: Once a week

Ideal pH Levels: Concrete Pools: 7.4 - 7.6 Fibreglass/Vinyl Pools: 7.0 - 7.2

A pH of 8.0 makes oxidization only about 26% efficient which is why it is critical to keep your pH in range.

A correct pH level must be maintained to prevent problems such as black spot, staining, cloudy water, etc. An incorrect pH level can damage the surface finish and walls of your pool.

When pH is high you can add Hydrochloric Acid to lower the pH.

When pH is low you can add pH Increaser - sodium bicarbonate (soda ash) to increase the pH.

8.4 Total Alkalinity

Measurement Interval: Every 4-6 weeks

Ideal Total Alkalinity Levels: Concrete Pools: 80 - 150ppm Fibreglass/Vinyl Pools: 80 - 120ppm

Total Alkalinity should not be confused with pH, although the two are closely related. Total Alkalinity determines the speed and ease of pH change, it is measured in ppm. You should use a test kit which includes a test for Total Alkalinity. Low Total Alkalinity can cause unstable pH levels. This causes an inability to keep the pH constant and may cause staining, etching and corrosion of metals. High Total Alkalinity will cause constantly high pH levels.

When Total Alkalinity is high you can add Hydrochloric (a little at a time) to lower the Total Alkalinity.

When Total Alkalinity is low you can add pH Buffer - sodium bicarbonate to raise the Total Alkalinity.

8.5 Calcium Hardness

Measurement Interval: Every 3 months

Ideal Calcium Hardness Levels: Concrete Pools: 250 - 300ppm
Fibreglass/Vinyl Pools: 150 - 190ppm

In addition to pH and Total Alkalinity, Calcium Hardness must be kept in balance so that your pool water does not become too corrosive or end up scaling the surface of your pool. These are symptoms of swimming pool water that is unbalanced.

8.6 Stabiliser

Measurement Interval: Every 4-6 weeks

Ideal Stabiliser Levels: 30 - 70ppm

The importance of pool Stabiliser cannot be over emphasised. It is essential in helping retain chlorine in your pool. Chlorine is rapidly dissipated by sunlight and the use of Stabiliser will reduce this dissipation dramatically. Without Stabiliser, it may be necessary to run the unit for longer hours.



THE MOST IMPORTANT NOTICE AND WARNING:

Only add chemical in the method and quantities as indicated on the packaging provided or advised by your local pool Professional. Also, if in doubt of any results you achieve then do not hesitate to consult with your local pool Professional.

9. CHLORINATOR MAINTENANCE

Maintenance of your VAPURE VP-Series Salt Chlorinator is simple. Your unit has to be one of the most productive pieces of equipment on your swimming pool so it requires some basic maintenance.

While water chemistry will always be the most important form of maintenance there are also other hints and pointers to take note of.

DO NOT cover the Power Pack with towels or similar. There are vents that could be closed and these need air to keep the unit cool.

To extend the life of your unit we always recommend installation in an under cover area away from the elements.

Placing the unit in a closed shed or similar environment with chemicals, fertilisers and other corrosives will damage the unit and could void your warranty.

Keep the chlorinator off at all times during backwash cleaning of your filter. Please remember to turn it on once done and return the unit to AUTO mode. **See 6.7 BACKWASH** for further details.

Check that the plug connections on the Cell and the base of the unit are tight and are in sound condition at least once a year.

9.1 Inspecting and Cleaning the Cell Electrode

Reverse Polarity cells should not normally require cleaning, however, in areas with very hard water all calcium may not be removed. A calcium deposit might form on the lower areas of the cell, the sensor or the sides of the cell plates. This will NOT affect the operation of your chlorinator, however you can use Cell Cleaner to clean the Cell.

All salt chlorinator cells must be cleaned before scale/calcium builds up to the point where the electrode gaps in the Cell are bridged. If the Cell has excessive calcium deposit, this may damage the electrode coating, as the bridging causes rubbing on the plate coating and this will affect the operation.

Check the Cell to prevent the accumulation of pool debris that for any reason may have by-passed the pool filter, particularly after backwashing.

Check that the O-ring is clean, greased with silicone grease (**DO NOT** use petroleum based jelly) and securely located in the Cell Housing.

For cleaning, please follow these steps:

Press [POWER] to OFF as this ensures the pump and the unit will not turn on.

Unscrew the Cell Locking Ring and remove the electrode for inspection. If calcium build-up is present, immerse the electrode in Cell Cleaner.

A solution can be made by mixing 1 part hydrochloric acid to 10 parts of water. If excessive build up is present a stronger solution may be used to remove the calcium. Using 5 parts of water will make a more aggressive solution but will not damage the Cell. You can use Cell Cleaner and if you do then follow the instruction supplied.

Allow the cleaning solution to dissolve the calcium deposits for about 10 minutes. Dispose of the cleaning solution at an approved Council Depot and never into storm water or sewage drains.

9. CHLORINATOR MAINTENANCE

HANDY TIP:

Returning this mix to your pool only returns the calcium you just removed, so you may be better off reusing the solution until exhausted then disposing of it. Always store this solution in a safe method as advised on the container.

Do not scratch or bend the electrode plates in the Cell Housing.

Ensure that the O-ring is clean, greased and properly seated.

Rinse the electrode in clean water and re-fit the electrode in the Cell Housing, ensuring that the Cell Locking Ring is hand tight and secure.



When mixing acid with water, **ALWAYS ADD ACID TO WATER. NEVER ADD WATER TO ACID.** Eye Protection, mask and gloves should be worn when cleaning the cell.

9.2 Inspecting the Power Pack

Little or no maintenance is normally required with the Oasis CX Premium Salt & Mineral Chlorinator Power Pack.

Ensure the Power Pack 3 pin plug plugs into a suitable weatherproof RCD protected 10amp outlet. Ensure that the pump plugs into the 3 pin AC Socket located at the bottom of the Power Pack. Check all plugs and cords for damage. If damaged then it should be replaced by the manufacturer, their agent or similar qualified person, in order to avoid a hazard.

If the chlorinator is to be hard wired, then a qualified electrician must complete the installation.

The Oasis CX Premium Salt & Mineral Chlorinator Power Pack has air vents to allow internal components to remain cool in hot weather. The VAPURE VP-Series Salt Chlorinator has a special oil spray applied to the inside of the unit during production to stop the insects from entering the unit. To help assist in keeping the insects away, apply a surface spray periodically on the wall or post that the unit is mounted on. DO NOT spray directly into the Power Pack and make sure the power is off when you spray. Allow adequate time for the spray to dry before turning power on again.

10. SYSTEM TROUBLESHOOTING



If you suspect for any reason your Oasis CX Premium Salt & Mineral Chlorinator is not performing or running as it should be, here are some handy troubleshooting tips that may assist you.

	Fault Indication	Potential Cause	Remedy
10.1	FAULT LED «ON»	Numerous causes	See the LCD DISPLAY for the reason then go to that section in this troubleshooting guide
10.2	HIGH SALT WARNING	Salt too high or short on cell plates	Check Salt guide (sec. 6.6/8.2) Check that cell is clear of any foreign materials (e.g. wire, metal, touching plates, etc)
10.3	INTERNAL TEMPERATURE HIGH	No air flow in the area around the POWER PACK or excessively high salt	Ensure POWER PACK is mounted in a well ventilated area free of chemicals and fertilisers Check Salt guide (sec. 6.6/8.2)
10.4	LOW SALT or CLEAN CELL or FAULTY CELL	Low salt level	Check salt level (sec. 6.6/8.2)
		Build up of calcium on the Cell plates	Calcium acts as an insulator and needs to be removed See Cleaning of Cell Electrode (sec. 9.1)
		Water temperature is low	Winter water temperature can be very low. For every 1°C below 28°C the output can drop 2-3%
		Insufficient water flow through the Cell	Check water flow and ensure a full chamber of water is passing over the Cell. You may need to backwash your filter (sec. 6.7)
		The Cell could be damaged or at the end of its life	Damaged coating will reduce cell life and reduce output If all conditions are correct then Cell could be at the end of its life
		Level low in one direction but OK in the other	Cell may need cleaning (sec. 9.1) or the Cell may have run its life in one direction
10.5	NO CURRENT FLOW - NO OUTPUT	Faulty CONTROL or MAIN PCB	Faulty PCB - contact for service
10.6	WATER FLOW FAULT	No water flow	Possible closed valve, pump fault, burst pipe
		Low water flow	Water does not cover the water sensor
		Low speed pump not supplying sufficient water to cell housing	Increase the speed of the pump until housing is filled
10.7	WATER TEMP HIGH	No water flow	Possible closed valve, pump fault, burst pipe
10.8	WATER TEMP LOW	Water temperature is below 10°C	The POWER PACK will lower output when water temperature goes below 10°C to protect the cell plates

10. SYSTEM TROUBLESHOOTING

	Fault Indication	Potential Cause	Remedy
10.9	WATER TEMP SUDDEN INCREASE	No water flow	Possible closed valve, pump fault, burst pipe
10.10	Not operating at all - no lights	Not plugged into power point or power point not turned on	Check that POWER PACK POWER CORD goes into wall outlet and outlet is turned on
		Plugged into power point and turned on but still no power	Test wall outlet with a working appliance
		Wall outlet working but still no power	Check CIRCUIT BREAKER at bottom of POWER PACK Press white button to reset if tripped
		Pressed and reset but still no power	If you have checked all of the above then there is an internal fault - contact for service
		CIRCUIT BREAKER stays out in a tripped state	Faulty CIRCUIT BREAKER - contact for service
10.11	Not operating at all - comes on but turns off	CIRCUIT BREAKER resets but trips again	1. Excessively high salt - check salt (sec. 6.6/8.2) and lower it if needed 2. Short across Cell plates - remove Cell and check the plates for any metal lying across plates 3. Faulty rectifiers, transformer or Cell cable - call for service
10.12	Everything displays OK but not turning ON	Incorrect TIMER settings	Press POWER/MODE button until in ON mode. Does it work now?
		Yes, it works now.	Check TIMER settings (sec. 6.52) in CLOCK/TIMER Mode
		No, it does not work.	If the FAULT LED is ON then refer to 9.1 above. If only LCD DISPLAY is ON but nothing works - call for service
10.13	Sign of melting or burning of the Cell Connector Plug	Possible moisture entry to the plug	If melted then it will need replacing otherwise clean with WD40 or similar. Return for service if melted
10.14	OUTPUT reading is less than 100%	Low salt level	Check salt level (sec. 6.6/8.2)
		Build up of calcium on the Cell plates	Calcium acts as an insulator and needs to be removed See Cleaning of Cell Electrode (sec. 9.1)
		Water temperature is low	Winter water temperature can be very low For every 1°C below 28°C the output can drop 2-3%
		Insufficient water flow through the Cell Housing	Check water flow and ensure a full chamber of water is passing over the Cell You may need to backwash your filter (sec. 6.7)

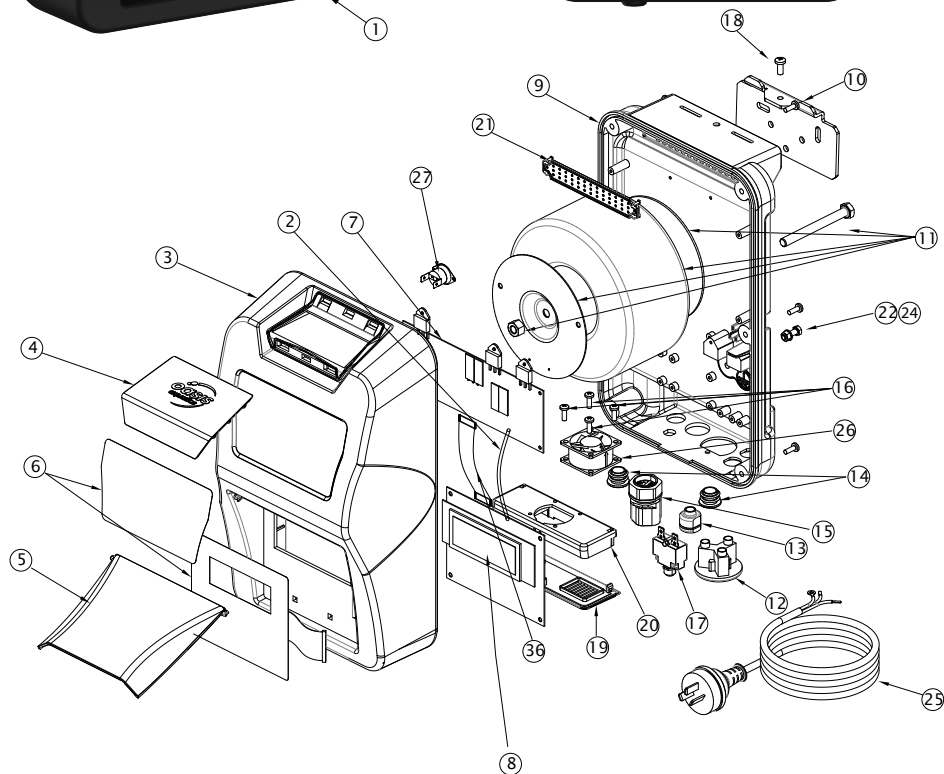
10. SYSTEM TROUBLESHOOTING

	Fault Indication	Potential Cause	Remedy
		The Cell could be damaged or at the end of its life	Damaged coating will reduce cell life and reduce output If all conditions are correct then Cell could be at the end of its life
		Level low in one direction but OK in the other	Cell may need cleaning (sec. 9.1) or the Cell may have run its life in one direction
		Continuous build up of calcium	See this troubleshooting sec 9.10
10.15	Power Pack only works in one direction No output in one direction	Faulty rectifiers, transformer or PCB	Return unit for service
10.16	Timer is not functioning properly in AUTO	Incorrect settings	Make sure POWER/MODE is set to AUTO. Refer to Timer Setting in this manual (sec. 6.52)
10.17	Pool pump outlet not functioning properly or pump always on	Pump not plugged into the base of chlorinator	Check that pump is plugged into the bottom of the POWER PACK and not directly in to the wall outlet Make sure you are set in AUTO mode and not MANUAL for normal running
10.18	Cell not cleaning, excessive calcium build up on Cell or Power Pack not changing direction	Excessively high calcium, change of direction time set too high or faulty PCB	1. See Calcium Hardness test (sec 8.5) and adjust water accordingly 2. Change the Cell Cleaning times (sec. 7.3) 3. Manually try changing direction by holding both [<] and [>] buttons in for 3 sec (you must be in the default display screen for this to work). Failure for this to work could indicate a faulty PCB - return for service
10.19	Low or No Chlorine Output	Unit not working correctly	Go through Troubleshooting from 9.1
		Stabiliser is too low	Check Stabiliser guide (sec 8.6)
		Unit not set correctly	Basic settings such as Output Control and Timer running hours need to be checked Go through all settings in sec. 5, 6 & 7 and balance water accordingly
		Salt level is to low	Check Salt guide (sec. 6.6/8.2)
		pH is too high	Check pH guide (sec. 8.3)
		Cell at the ends of its life	If full output is not reached then it could be a failing Cell
10.20	Timer loses time when mains power removed	Battery life expired	Replace Battery - return for service

DISCLAIMER: Information in this guide is intended to provide general information on a particular subject(s) in good faith and is not an exhaustive treatment of such subject(s). Its use is beyond the control of the author, contributor, publishers and distributors and should not be relied upon without consulting qualified, professional and comprehensive advice. This guide includes subject(s) that should only be performed by or under the direction and advice of qualified and licenced professionals and under no circumstances should the guide be used as a substitute for such professionals. No representations or warranties are made that the content, advice and recommendations in this guide are current, free from errors or omissions, or appropriate for the user's circumstances or abilities. No liability or responsibility is accepted for any loss suffered as a result of any user's reliance on such content. Repairs should only be carried out by qualified persons or OASIS AQUATICS Pty Ltd appointed agents. OASIS AQUATICS Pty Ltd reserves the right to refuse warranty if any damage caused to the chlorinator or auxiliary pool equipment that is not a result of a manufacturer's defect.

11. SCHEMATICS AND PART NUMBERS

Oasis CX Premium Salt & Mineral Chlorinator



11. SCHEMATICS AND PART NUMBERS



Oasis CX Premium Salt & Mineral Chlorinator (PARTS LIST)

POWER PACK

	CODE	CX Description
1	SL-15PP	Oasis CX 15 Power Pack
1	SL-25 35 45PP	Oasis CX25, CX35 & CX45 Power Pack
1	SL- 55PP	Oasis CX 55 Power Pack
2	N00895	Wire Loom SL-12 - Multi PCB TB-GND Pin 1 to LCD PCB RB-GND Pin 1 BLACK
3	N00364	Oasis CX Front Cover BLACK
4	N01209	Top Vent Cover - Plastic with Oasis logo BLACK
5	N00367	Acrylic Front Flap - SL Model Plastic BLUE
6	N00871	Oasis CX Decal Sticker (set of 2)
7	N00693	Multi Triac Shunt PCB
8	N00496	Oasis CX LCD Display PCB
9	N00356	Aluminium Die Casting with BLACK Outer Coating
10	N00453-2	Oasis CX Mounting Bracket
11	N00024-1	Transformer 440VA for 55g/hr Model
11	N00023-1	Transformer 300VA for 25, 35 & 45g/hr Model
11	N00022	Transformer 220VA for 15g/hr Model
12	N00498	AC Socket Round - Pump Outlet Flush Mount BLACK (Side Wire Entry)
13	N00869	Grommet 6N-4 Cable Strain Relief Bush
14	N00501	Grommet Rubber AUX Hole up to 19mm
15	N00488	Oasis CX Plug SL-10 Male End Complete with Power Supply Looms
16	N00054	Screw M3x12 Stainless Steel 304 (Fan)
17	N00018-2	Circuit Breaker 3amp (up to 45g/hr models) with 6.3mm push on
17	N00019-2	Circuit Breaker 5amp (for model 55g/hr and greater) with 6.3mm push on
18	N00053-1	Screw M4x10 Stainless Steel 304 (Slimline Front Case & Bracket)
19	N00368	Oasis CX Bottom Vent Cover BLACK
20	N00369	Oasis CX Fan Support Plate BLACK
21	N00370	Oasis CX Snap Fit Gauze BLACK
22	N00478	Screw Pan Head M5x10 Stainless Steel 304
24	N00049	Internal Tooth Washer for Earth M5 S/S
25	N00011	Power Cord-Au
26	N00323	Cooling Fan 40x40x10mm (only VP55 model)
27	N00027-1	Thermostat 100degC

PARTS AND COMPONENTS (Not shown in schematic)

	CODE	VAPURE Description
30	N00047	Washer 37x37x2.5 Zink Plated
31	N00207	Wire Loom SL-01 - Circuit Breaker LOAD to Transformer Active BROWN
32	N00223	Wire Loom SL-02 - AC Socket N to PCB N BLUE
33	N00224	Wire Loom SL-03 - AC Socket L to PCB PUMP-L BROWN
34	N00348	Wire Loom SL-04 - Circuit Breaker LINE to PCB A BROWN
36	N00485	Wire Loom SL-11 - Ribbon Cable with RED line and Header Sockets
37	N00008	Wire Loom CC-05 - Earth Wire
38	N00036	Cable Tie 3mm
39	N00560	Green Wall Plugs
40	N00217	Screw Self Tapping M5x25 Stainless (Wall)
41	N00053-1	Screw M4x10 Stainless Steel 304 (Slimline Front Case & Bracket)
42	N00052	Screw M3x6 Stainless Steel (Triac Connection and PCB)
43	N00067	Oasis CX Power Supply Carton Box
44	N01208	Sleeve - OASIS CX Model
45	N00874	Oasis CX Operating Manual
46	N01207	OPERATING MANUAL - OASIS CX Model

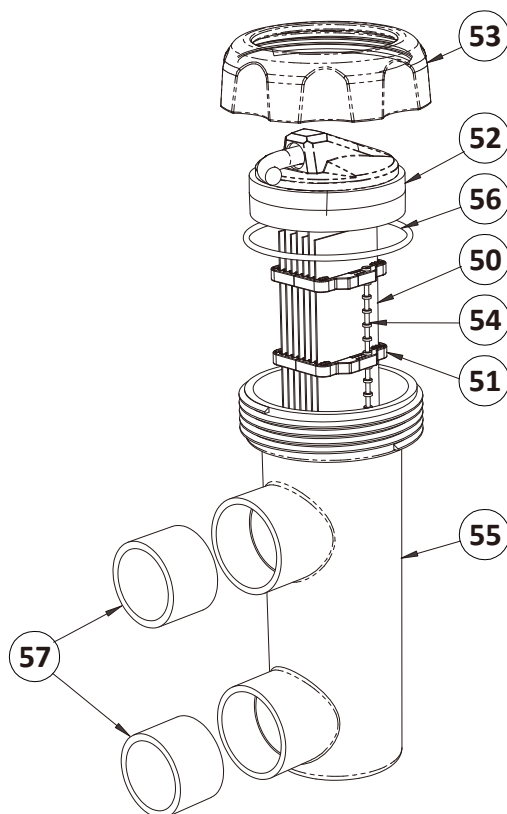
11. SCHEMATICS AND PART NUMBERS



Oasis CX Premium Salt & Mineral Chlorinator (PARTS LIST)

ELECTRODE CELL PARTS

	CODE	CX Description
50	SL-CELL15RP	OASIS CX 15 g/hr Cell ONLY
50	SL-CELL25RP	OASIS CX 25 g/hr Cell ONLY
50	SL-CELL25RP-LS	OASIS CX 25 g/hr LOW SALT Cell ONLY
50	SL-CELL35RPB	OASIS CX 35 g/hr Cell ONLY
50	SL-CELL45RPB	OASIS CX 45 g/hr Cell ONLY
50	SL-CELL55RPB	OASIS CX 55 g/hr Commercial Cell ONLY
51	N00455	Cell Clip Crystal 9 Plate BLUE
53	N00492	Cell Locking Ring - Screw Cap Large Grip
54	N00322	Cell Clip Spacer Rod BLUE
55	N00465	Cell Housing-Smokey Grey
56	N00460-1	O'ring – Cell Housing EPDM Black
57	N00670-1	PVC Reducing Bush 50x40mm



12. SPECIFICATION TABLE

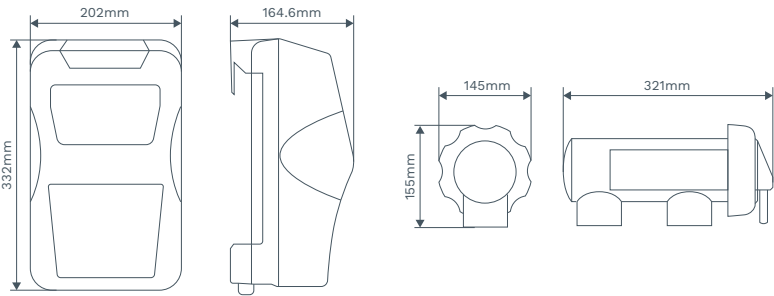
Made from premium grade materials, the Oasis Salt & Mineral Chlorinator provides fast setup and installation.

Features

- These units are fully automated, efficiently controlling chlorine production to keep your pool healthy. Our sophisticated units feature self cleaning, backwash super chlorinate and winter mode functions.

 - > Fast setup with new or existing pool systems
 - > Quick release cell
 - > Cell can be installed horizontally or vertically
 - > Variable speed pump compatible
 - > Smart temperature sensors (Power supply & water)
 - > Low Salt operations 3000-3500ppm (0.3% - 0.35%) with built in self-regulator for high salt
- > Fresh water option available in XXXX Models < 1500 ppm (<0.15%)
 - > Bright backlit display
 - > Smart self cleaning cell electrodes
 - > Premium titanium quick connect cell
 - > Backwash, super chlorinate and winter mode functions
 - > Single or dual timer cycles
 - > Salt / TDS test and water flow protection
 - > Automatic battery backup timer
 - > Modern slimline design
 - > Suitable for any pool type (concrete, fibreglass, vinyl and tiled)

Dimensions



Specifications

Model	Description	Output	Pool Volume (litres) Cool Climate	Pool Volume (litres) Warm Climate	Max Pump Size	Max Current including Pump
CX15	CX15 Salt & Mineral Chlorinator	15g /hr	50,000	35,000	8 amps	10 amps
CX25	CX25 Salt & Mineral Chlorinator	25g /hr	85,000	55,000	8 amps	10 amps
CX35	CX35 Salt & Mineral Chlorinator	35g /hr	120,000	80,000	8 amps	10 amps
CX45	CX45 Salt & Mineral Chlorinator	45g /hr	160,000	105,000	8 amps	10 amps
CX55	CX55 Salt & Mineral Chlorinator	55g /hr	200,000	130,000	8 amps	10 amps

13. WARRANTY

THIS EQUIPMENT HAS BEEN MANUFACTURED AND TESTED TO THE HIGHEST STANDARD AND ACCORDINGLY CARRIES THE FOLLOWING WARRANTY.

- 13.1 The Oasis CX Premium Salt & Mineral Chlorinator Power Pack & Electrolytic Cell will be repaired at no charge, for a period of 3 years or 10 000 hours, whichever occurs first, from the date of purchase should it be found, after examination, that the failure has been caused by faulty workmanship or materials. This is a back to base warranty.
- 13.2 Adverse operating conditions beyond the control of the manufacturer such as improper voltage or water pressure, excessive ambient temperature or any condition that adversely affects the performance of the equipment will render this warranty null and void.
- 13.3 Defective equipment must be returned to the manufacturer or dealer as soon as the purchaser becomes aware of the defect and all transport must be prepaid. Neither the manufacturer nor the dealer shall be responsible for any goods damaged in transit.
- 13.4 If after examination the equipment is found to be defective it will be repaired or replaced free of charge (other than transport costs which will be borne by the purchaser). However, if upon inspection of the equipment it is found that the terms of this warranty are not satisfied, then the usual charges of the manufacturer for repair or replacement will be made.
- 13.5 Any liability of the manufacturer pursuant to the Trade Practices Act 1974, as amended for a breach of a condition or warranty shall be limited to replacing or acquiring the equipment (or part thereof) where the same has been supplied.
- 13.6 The maximum liability incurred by the manufacturer shall not in any case exceed the contract price for the equipment or the product parts or components thereof claimed to be defective. Further, the manufacturer shall not be liable for any loss, damage or delay directly or indirectly caused by any malfunction of or defect of or failure of the equipment other than as expressly provided in this warranty.
- 13.7 Products sold by the manufacturer are designed for use with swimming pool water balanced in accordance with the Langelier Saturation Index with a pH range of 6.8-7.8. Chlorine level should not exceed 4ppm and the salt level should not exceed 4000ppm.
- 13.8 The manufacturer will not be held liable for damage caused by, but not limited to, corrosion, scaling or stress.



The Warranty is void under the following circumstances:

- Installation is carried out incorrectly by any person other than a person authorised by us to do so.
- The Power Pack or Cell is serviced by any person other than a person authorised by us to do so.
- Correct salt levels are not maintained at all times.
- The Power Pack is not protected from the elements.
- The Power Pack is not operated in a position/area with good ventilation.
- Water has been allowed to enter the Power Pack.
- Insect infestation or penetration by dust, sand or other foreign particles inside the Power Pack.
- Damage beyond our control.
- Equipment that has been misused, neglected, damaged, repaired without authorisation or altered in any way.
- This warranty is applicable to workmanship and materials only.
- This warranty is not transferable under any circumstance.
- Keep your original purchase invoice and serial number in a safe place.

13. WARRANTY

THIS EQUIPMENT HAS BEEN MANUFACTURED AND TESTED TO THE HIGHEST STANDARD AND ACCORDINGLY CARRIES THE FOLLOWING WARRANTY.

- 13.1 The Oasis CX Premium Salt & Mineral Chlorinator Power Pack & Electrolytic Cell will be repaired at no charge, for a period of 3 years or 10 000 hours, whichever occurs first, from the date of purchase should it be found, after examination, that the failure has been caused by faulty workmanship or materials. This is a back to base warranty.
- 13.2 Adverse operating conditions beyond the control of the manufacturer such as improper voltage or water pressure, excessive ambient temperature or any condition that adversely affects the performance of the equipment will render this warranty null and void.
- 13.3 Defective equipment must be returned to the manufacturer or dealer as soon as the purchaser becomes aware of the defect and all transport must be prepaid. Neither the manufacturer nor the dealer shall be responsible for any goods damaged in transit.
- 13.4 If after examination the equipment is found to be defective it will be repaired or replaced free of charge (other than transport costs which will be borne by the purchaser). However, if upon inspection of the equipment it is found that the terms of this warranty are not satisfied, then the usual charges of the manufacturer for repair or replacement will be made.
- 13.5 Any liability of the manufacturer pursuant to the Trade Practices Act 1974, as amended for a breach of a condition or warranty shall be limited to replacing or acquiring the equipment (or part thereof) where the same has been supplied.
- 13.6 The maximum liability incurred by the manufacturer shall not in any case exceed the contract price for the equipment or the product parts or components thereof claimed to be defective. Further, the manufacturer shall not be liable for any loss, damage or delay directly or indirectly caused by any malfunction of or defect of or failure of the equipment other than as expressly provided in this warranty.
- 13.7 Products sold by the manufacturer are designed for use with swimming pool water balanced in accordance with the Langelier Saturation Index with a pH range of 6.8-7.8. Chlorine level should not exceed 4ppm and the salt level should not exceed 4000ppm.
- 13.8 The manufacturer will not be held liable for damage caused by, but not limited to, corrosion, scaling or stress.



The Warranty is void under the following circumstances:

- Installation is carried out incorrectly by any person other than a person authorised by us to do so.
- The Power Pack or Cell is serviced by any person other than a person authorised by us to do so.
- Correct salt levels are not maintained at all times.
- The Power Pack is not protected from the elements.
- The Power Pack is not operated in a position/area with good ventilation.
- Water has been allowed to enter the Power Pack.
- Insect infestation or penetration by dust, sand or other foreign particles inside the Power Pack.
- Damage beyond our control.
- Equipment that has been misused, neglected, damaged, repaired without authorisation or altered in any way.
- This warranty is applicable to workmanship and materials only.
- This warranty is not transferable under any circumstance.
- Keep your original purchase invoice and serial number in a safe place.



For all warranty enquiries please contact your local distributor or contact Sunlover Heating Pty Ltd directly and we will either direct you to your nearest authorised repairer or assist you with

OASIS AQUATICS

Ph: 1800 815 913

Website: oasisaquatics.com.au

Email: info@oasisaquatics.com.au



DISCLAIMER

Information in this guide is intended to provide general information on a particular subject(s) in good faith and is not an exhaustive treatment of such subject(s). Its use is beyond the control of the author, contributor, publishers and distributors and should not be relied upon without consulting your local Professional for comprehensive advice.

This guide includes subject(s) that should only be performed by or under the direction and advice of your local Professional and under no circumstances should the guide be used as a substitute for such professionals.

No representations or warranties are made that the content, advice and recommendations in this guide are current, free from errors or omissions, or appropriate for the user's circumstances or abilities. No liability or responsibility is accepted for any loss suffered as a result of any user's reliance on such content.

15. NOTES

[illegible]



A part of the



Victoria

62 Parkhurst Drive
Knoxfield VIC 3180
Australia
T: 03 9887 2131

New South Wales

Unit 1, 20-22 Foundry Road
Seven Hills NSW 2147
Australia
T: 02 9838 0000

Queensland

Unit 4, 8 Reichert Drive
Molendinar QLD 4214
Australia
T: 07 5679 6821

oasisaquatics.com.au
info@oasisaquatics.com.au